

Function	Flow [max]	Manifold mounting	Series
3/2 NC, Universal	Up to 0.08 Cv	Cartridge	BV310A

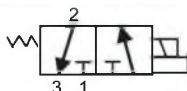
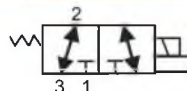
OPERATIONAL BENEFITS

1. Short stroke with high shifting forces
2. Balanced poppet, immune to pressure fluctuations
3. Precise repeatability
4. Solenoid isolated from contaminated air
5. Very few parts
6. Extremely long life
7. Unique mounting - no fasteners or screws required



HOW TO ORDER

HOW TO ORDER VALVE

Type	3 Way N.C.	3 Way Universal
		
Cartridge	BV310A-CC1-00-xxxx-xxx	BV310A-CD1-00-xxxx-xxx

SOLENOID OPERATOR

X X X X - X X X				
Solenoid	Voltage	Lead wire length	Solenoid can (round)	Solenoid cover
B Round	HA 24VDC (1.0W) HB 24VDC (1.8W) HC 24VDC (2.5W) HD 24VDC (3.0W) HE 24VDC (4.0W) HF 12VDC (1.0W) HG 12VDC (1.8W) HH 12VDC (2.5W) HJ 12VDC (3.0W) HK 12VDC (4.0W)	0 No lead wire A 18" B 24" C 36" D 48" E 72" F 96" H 144"	C For Top Cover Option and Can w/ Outer Threads	JST Connector Flying Leads TA No ground wire BA TC Blocking & suppr. BC diode & LED (no ground) TE Blocking & suppr. BE diode (no ground) TG LED (no ground) BG TJ MOV (no ground) BJ TL LED & MOV BL (no ground)

* High wattage - high speed options - consult factory

** ERC wattage reduction options - consult factory

* M8 (pico) connector - Consult factory

HOW TO ORDER CIRCUIT BAR

Port size	Spacing (mm)	Side cylinder port
# 10-32 UNF	12	CCMV10A-00ABA-xx
M5	12	CCMV10A-00ABB-xx
M7	12	CCMV10A-00ABC-xx

xx = Number of stations

Note: for valves mounted to bar at factory, add -9 to model number.

* High wattage configurations require intermittent duty cycles.

** ERC - Energy Reduction Circuitry - Reduces the effective wattage at continuous duty.

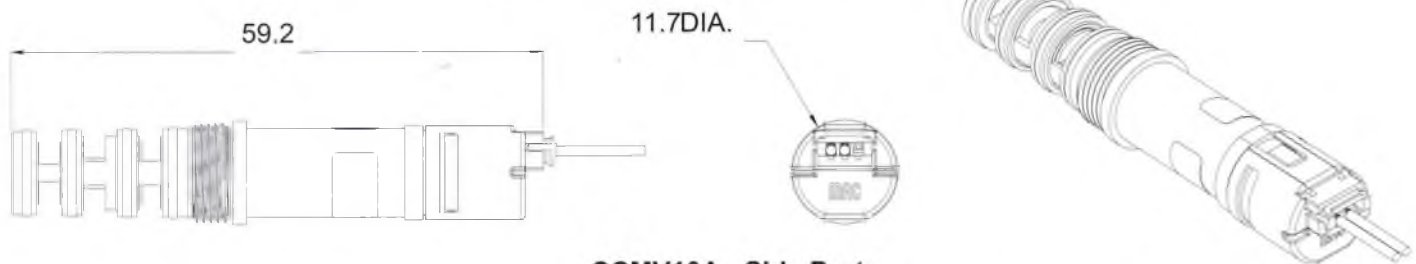
TECHNICAL DATA

Fluid:	Compressed air, vacuum, inert gases
Pressure range:	Vacuum to 120 PSI
Lubrication:	Not required, if used select a medium aniline point lubricant (between 180°F and 210°F)
Filtration:	40μ
Flow (at 6 bar ΔP=1bar):	Up to 0.08 Cv
Voltage range:	-15% to +10% of nominal voltage

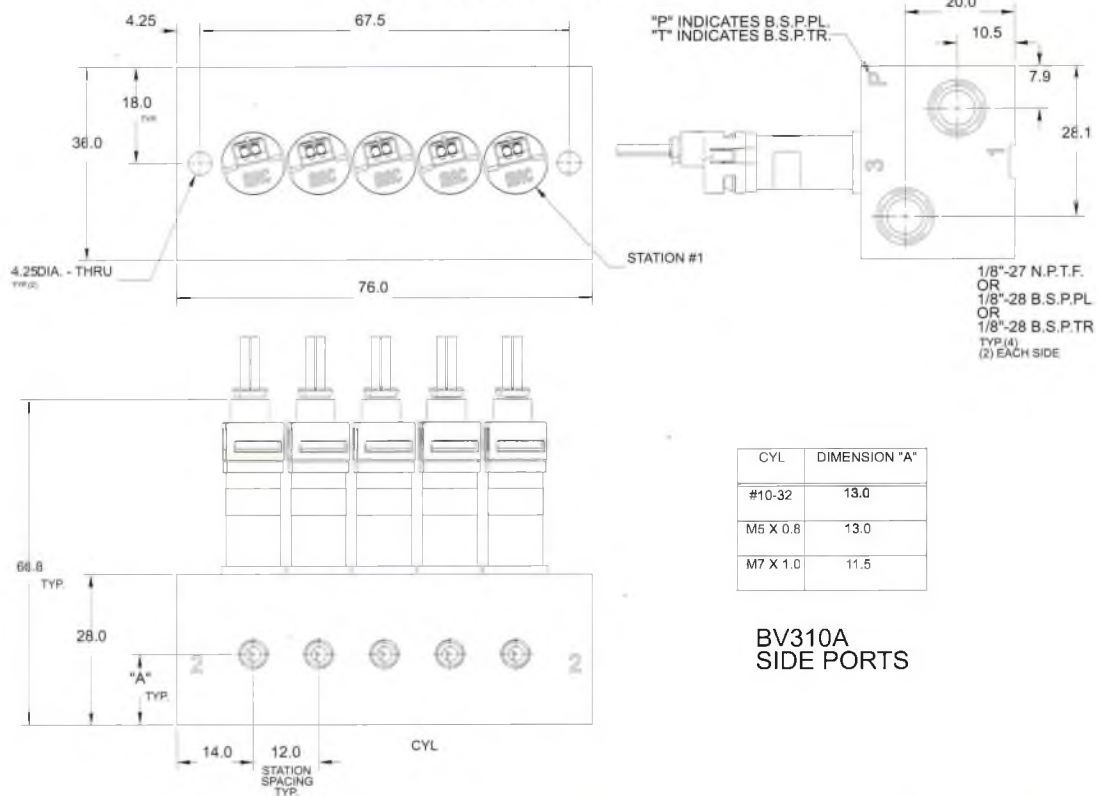
Tools: • Manifold cavity step reamer: T-6963 • Insertion/removal socket: AT-1181

DIMENSIONS

Bullet Valve with "JST" Cover and Circuit Board for LED., MOV., & Diode Options BV310A (3-way) - Standard Watt



CCMV10A - Side Ports



CYL	DIMENSION "A"
#10-32	13.0
M5 X 0.8	13.0
M7 X 1.0	11.5

**BV310A
SIDE PORTS**