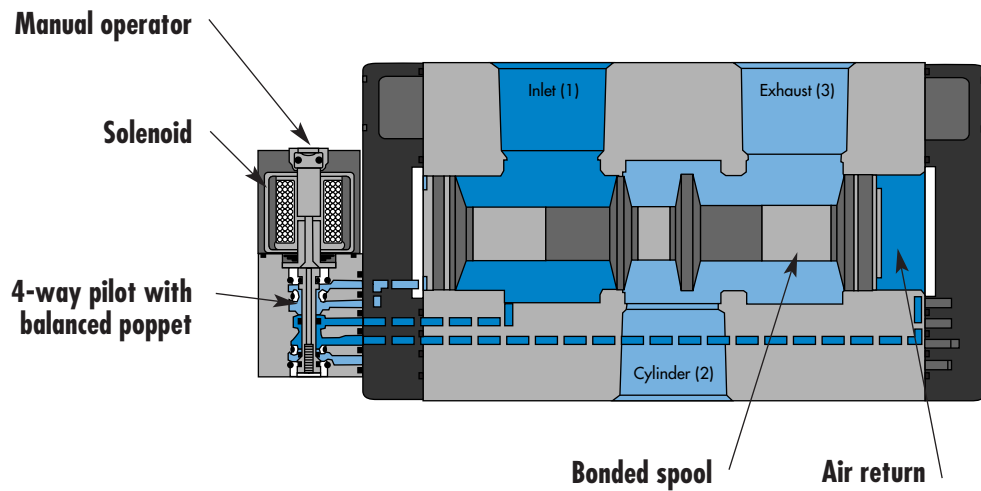


Individual mounting

Series

Inline

33
34
36
32
37
38
52
67



69
44
46
42
47
48P
48
400
92

SERIES FEATURES

- Patented MACSOLENOID® for fastest possible response times and virtually burn-out proof AC solenoid operation.
- Optional low watt DC solenoids.
- Normally closed or normally open valve function.
- Optional universal spool.
- Internal or external pilot.
- Optional memory spring.
- Checked accumulator.
- Optional pilot exhaust to main valve exhaust.
- May be plugged for 2-way operation.

93
ISO 01
ISO 02
ISO 1
ISO 2
ISO 3

Function	Port size	Flow [Max]	Individual mounting	Series
3/2 NO-NC, 2/2 NO-NC	3/4" - 1"	20.0 C_v	Inline	

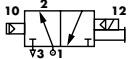
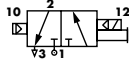
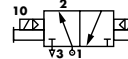
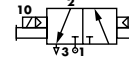
OPERATIONAL BENEFITS

1. The 4-way pilot develops maximum shifting force both ways.
2. Memory spring available.
3. Balanced spool, immune to variations of pressure, also provides high flow.
4. Short stroke with high flow.
5. Bonded spool with minimum friction, shifting in a glass-like finished bore.
6. Pilot with balanced poppet, high flow, short and consistent response times.
7. Wiping effect eliminates sticking.



33
34
36
32
37
38
52
67

HOW TO ORDER

Port size	Pilot air	Single Operator		Double Operator	
		NO Valve	NC Valve	NO Valve	NC Valve
					
3/4" NPTF	Internal	67A-Cx-AAA-DM-Dxxx-xxx	67A-Ax-AAA-DM-Dxxx-xxx	67A-Dx-AAA-DM-Dxxx-xxx	67A-Bx-AAA-DM-Dxxx-xxx
1" NPTF		67A-Cx-BAA-DM-Dxxx-xxx	67A-Ax-BAA-DM-Dxxx-xxx	67A-Dx-BAA-DM-Dxxx-xxx	67A-Bx-BAA-DM-Dxxx-xxx
3/4" NPTF	External	67A-Cx-AAB-DM-Dxxx-xxx	67A-Ax-AAB-DM-Dxxx-xxx	67A-Dx-AAB-DM-Dxxx-xxx	67A-Bx-AAB-DM-Dxxx-xxx
1" NPTF		67A-Cx-BAB-DM-Dxxx-xxx	67A-Ax-BAB-DM-Dxxx-xxx	67A-Dx-BAB-DM-Dxxx-xxx	67A-Bx-BAB-DM-Dxxx-xxx

69
44
46
42
47
48P

SOLENOID OPERATOR >

DM-D xxx-xxx*

XX Voltage	X Wire length	X Manual operator	XX Electrical connection
JA 110/50, 120/60 (2.9W)	A 18"	1 Non-locking recessed	KA Square connector
JB 220/50, 240/60 (2.9W)	B 24"	2 Locking recessed	KD Square connector with light
JC 24/60 (2.9W)	J Connector		JB Rectangular connector
FB 24 VDC (1.8W)			JD Rectangular connector with light
DA 24 VDC (5.4W)			BA Flying leads
DF 24 VDC (12.7W)			

* Other options available, see page 309.

48
400
92

OPTIONS

Spool type :

67A-**XX**-AAA-DM-Dxxx-xxx

- G** Single operator universal spool
- H** Double operator universal spool

Port configuration :

67A-XX-**AXA**-DM-Dxxx-xxx

- A** Standard pilot exhaust
- B** Pilot exhaust to main exhaust*
- C** Pilot exhaust out adapter*
- * Must use DU pilot. Replace DM with DU

Mounting style :

67A-XX-AA**X**-DM-Dxxx-xxx

- G** O-Ring mount

Spool return :

67A-**XX**-AAA-DM-Dxxx-xxx

- 1** Standard return
- 2** Standard return with memory spring (for use with single operator only)

Pilot style :

67A-XX-AAA-**DM**-Dxxx-xxx

- M** Pilot exhaust muffled
- P** Pilot exhaust piped (#10-32)
- U** Pilot exhaust to main exhaust

93
ISO 01
ISO 02
ISO 1
ISO 2
ISO 3

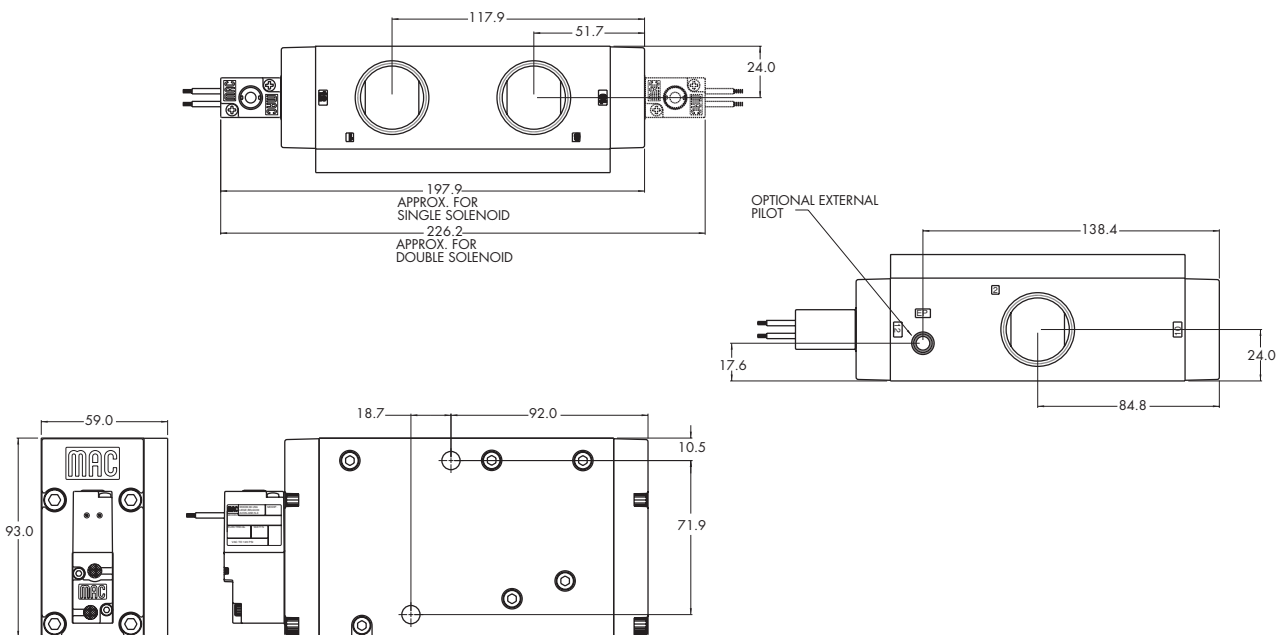
TECHNICAL DATA

Fluid :	Compressed air, vacuum, inert gases
Pressure range :	Internal Pilot : 20 to 120 PSI External Pilot : Vacuum to 120 PSI
Lubrication :	Not required, if used select a medium aniline point lubricant (between 180°F and 210°F)
Filtration :	40 μ
Temperature range :	0°F to 120°F (-18°C to +50°C)
Flow :	3/4" : (14.5 C _v) – 1" : (20.0 C _v)
Coil :	Class A continuous duty, #22 AWG x 18 lead wires
Voltage range :	-15% to +10% of nominal voltage
Protection :	Consult factory
Power :	~ Inrush : 7.6 VA Holding : 4.8 VA = 12.7 to 1.0 W
Response times : (with 5.4 W coil)	Energize : 29 ms De-energize : 21 ms

Options : • BSPP threads

DIMENSIONS

Dimensions shown are metric (mm)





Codification table for voltages / Manual operator / Electrical connection

VALVE CODE > **-DM- D XX X-X XX**
1 2 3 4

OPTIONS AVAILABLE FOR

- Pilot operated valves 52, 67, 92, 93, 400, ISO1, ISO2, ISO3 Series

1. VOLTAGE

D-XX X-X XX	VOLTAGE
DA	24 VDC (5.4W)
DB	12 VDC (5.4W)
DC	12 VDC (7.5W)
DD	24 VDC (7.3W)
DE	12 VDC (12.7W)
DF	24 VDC (12.7W)
DK	110 VDC (4.7W)
DJ	28 VDC (5.2W)
DL	64 VDC (6.0W)
DM	36 VDC (5.3W)
DN	6 VDC (6.0W)
DR	90 VDC (6.6W)
DS	110 VDC (7.3W)
DT	75 VDC (5.6W)
DP	48 VDC (5.8W)
FA	12 VDC (1.8W)
FB	24 VDC (1.8W)
FE	12 VDC (2.4W)
FF	24 VDC (2.4W)
JA	120/60, 110/50 (2.9W)
JB	240/60, 220/50 (2.9W)
JC	24/60, 24/50 (3.7W)
JD	100/60, 100/50, 110/60 (3.9W)
JE	220/60 (3.4W)
JF	240/50 (2.8W)
JG	200/60, 200/50 (3.9W)

2. WIRE LENGTH

D-XX X-X XX	WIRE LENGTH
0	No wires
A	18"
B	24"
C	36"
D	48"
E	72"
F	96"

3. MANUAL OPERATOR

D-XX X-X XX	MANUAL OPERATOR
0	No operator
1	Non-locking recessed
2	Locking recessed
3	Non-locking extended
4	Locking extended

4. ELECTRICAL CONNECTION

D-XX X-X XX	ELECTRICAL CONNECTION
BA*	Flying leads (grommet)
BK*	BA with protection diode
BL*	BA with protection varistor
BM**	Flying leads (solenoid plug-in)
BN**	BM with protection diode
BP**	BM with protection varistor
BG**	BM with ground
BH**	BM with protection diode & ground
BJ**	BM with protection varistor & ground
CA*	1/2" NPS conduit with flying leads
CM*	1/2" NPS metal conduit with flying leads
CN*	1/2" NPS metal conduit with flying leads & ground
JB	Rectangular connector
JD	JB with light
JM	Rectangular connector (male only)
KA	Mini square connector
KB	KA with protection diode
KC	KA with protection varistor
KD	KA with light
KE	KA with light and protection diode
KF	KA with light and protection varistor
KG	KA with light & diode
KJ	Mini square connector (male only)
KK	KJ with protection diode (male only)
KL	KJ with protection varistor (male only)
TA	Dual tabs with receptacles
TB	TA with protection diode
TD	TA with light
TE	TA with light and protection diode
TJ	Dual tabs (male only)
TK	TJ with protection diode
TM	TJ with light
TN	TJ with light and protection diode

* From Lead wire length options choose A through F
 ** From Lead wire length options choose 0 through F
 Note: When coil is above 30 volts, a ground wire is required. Applies to options with flying leads.