

Individual mounting

| | | |
|------------------------|--------------------|--|
| sub-base non "plug-in" | sub-base "plug-in" | |
|------------------------|--------------------|--|

Series

Manifold mounting

| | | |
|------------------------|--------------------|--|
| sub-base non "plug-in" | sub-base "plug-in" | |
|------------------------|--------------------|--|

35

100

200

55

56

57

58

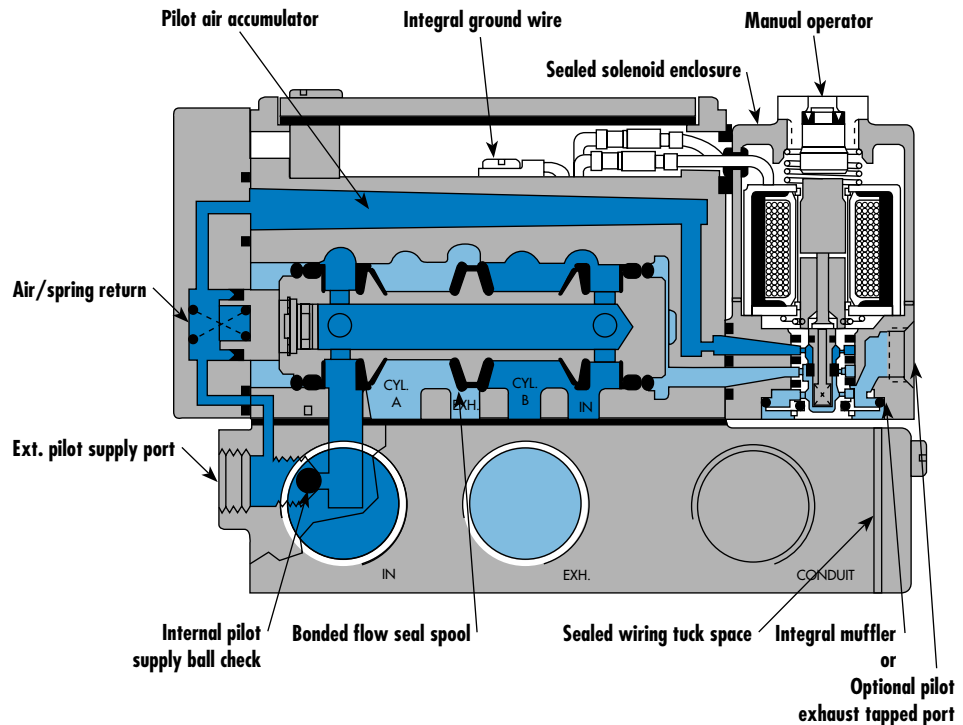
59

45

700

900

82



SERIES FEATURES

- The patented MACSOLENOID® with its non-burn out feature on AC service.
- A large checked accumulator for consistent shifting on single and double solenoid models.
- A plug-in design that provides for internal or external pilot with or without lights and all electrical and air plumbing in the base — the valve portion is the same.
- Non-lubricated or lubricated service.
- Optional low wattage DC solenoids down to 1 watt.
- Optional indicator lights, and various types of manual operators.
- Non plug-in or external plug-in models are available.

6300

6500

6600

1300

800

ISO 1

ISO 2

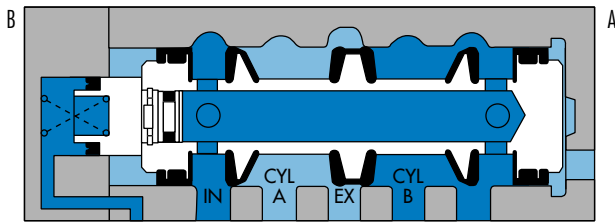
ISO 3

MAC 125A

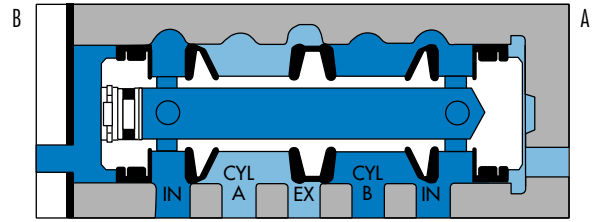
MAC 250A

MAC 500A

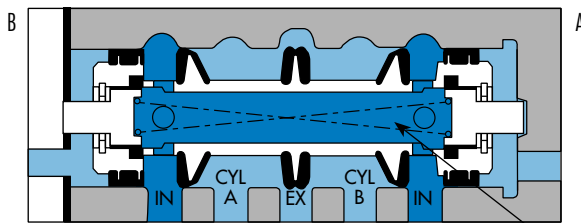
SPOOL CONFIGURATIONS



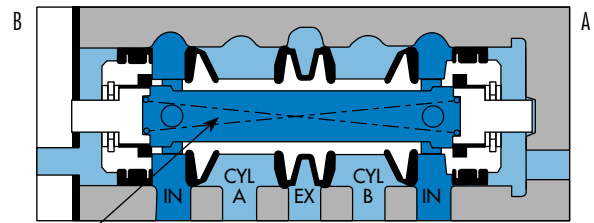
2 POS. SINGLE OPERATOR SPRING RETURN
B ACTUATED SHOWN



2 POS. DOUBLE OPERATOR
B ACTUATED SHOWN



3 POS. OPEN CENTER
CENTER POSITION SHOWN



3 POS. CLOSED CENTER
CENTER POSITION SHOWN

AIR/SPRING
CENTERING

VALVE CONFIGURATIONS AVAILABLE

The versatile 6300 Series provides high flow, extremely fast response, and long life in a compact package and is available in the following configurations:

- 2-Pos., single or double operators (solenoid or remote air).
- 3-Pos., double operator-Closed Center, Open Center or Pressure Center (solenoid or remote air).
- Single pressure.
- Dual pressure on manifolds with sandwich regulators.
- Individual base or add-a-unit manifold base.
- Internal pilot or for Vacuum to 25 PSI main valve pressures, external pilot.
- Manual and mechanical operators available.
- All models available with sandwich regulators (Except remote air pilot).

REMOTE AIR PILOT OPERATED VALVES

These remote air versions feature:

- A larged checked accumulator for air/spring return on single remote air models.
- Non-lubricated or lubricated service.
- All piping connections, including the remote air pilot supply, in the base.

REMOTE AIR PILOT, PILOT OPERATED VALVES

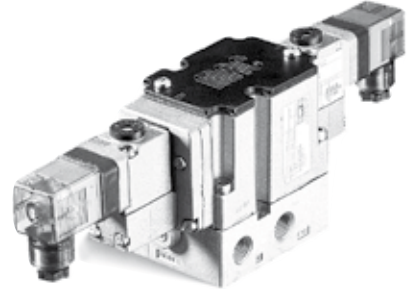
These special air versions have the same features as the remote air pilot operated models, but additionally feature:

- A manual operator and indicator.
- Ability to use a pilot signal pressure different from the main valve pressure. Pilot signal can be from 20 to 150 PSIG, regardless of main valve pressure.

| Function | Port size | Flow (Max) | Individual mounting | Series |
|------------------|---------------------------|--------------------------|------------------------|--------|
| 4/2 - 4/3 | 1/4" - 3/8" - 1/2" | 3.0 C_v | sub-base non "plug-in" | |

OPERATIONAL BENEFITS

- Balanced spool, immune to variations of pressure.
- Short stroke with high flow.
- High shifting forces.
- Checked accumulator guarantees maximum pilot pressure.
- Powerful return force thanks to the combination of mechanical and air springs.
- Bonded spool with minimum friction, shifting in a glass-like finished bore.
- Wiping effect eliminates sticking.
- Pilot valve with balanced poppet, high flow, short and consistent response times.



35
100
200
55
56
57
58
59

HOW TO ORDER

| Port size | Pilot air | 4/2 Single operator | 4/2 Double operator | 4/3 Closed center | 4/3 Open center |
|------------------------|-----------|----------------------------|----------------------------|----------------------------|----------------------------|
| | | | | | |
| Valve less base | | 6312D-000-PM- XXYZZ | 6322D-000-PM- XXYZZ | 6332D-000-PM- XXYZZ | 6342D-000-PM- XXYZZ |
| sub-base | Internal | 6312D-131-PM- XXYZZ | 6322D-131-PM- XXYZZ | 6332D-131-PM- XXYZZ | 6342D-131-PM- XXYZZ |
| 1/4" NPTF | External | 6312D-141-PM- XXYZZ | 6322D-141-PM- XXYZZ | 6332D-141-PM- XXYZZ | 6342D-141-PM- XXYZZ |
| sub-base | Internal | 6312D-231-PM- XXYZZ | 6322D-231-PM- XXYZZ | 6332D-231-PM- XXYZZ | 6342D-231-PM- XXYZZ |
| 3/8" NPTF | External | 6312D-241-PM- XXYZZ | 6322D-241-PM- XXYZZ | 6332D-241-PM- XXYZZ | 6342D-241-PM- XXYZZ |
| sub-base | Internal | 6312D-331-PM- XXYZZ | 6322D-331-PM- XXYZZ | 6332D-331-PM- XXYZZ | 6342D-331-PM- XXYZZ |
| 1/2" NPTF | External | 6312D-341-PM- XXYZZ | 6322D-341-PM- XXYZZ | 6332D-341-PM- XXYZZ | 6342D-341-PM- XXYZZ |

Note : Above codes shown are for side ports.

SOLENOID OPERATOR ►

XX Y ZZ*

| XX Voltage | Y Manual operator | ZZ Electrical connection |
|---------------------------|----------------------|--|
| 11 120/60, 110/50 | 1 Non-locking | JB Rectangular connector |
| 12 240/60, 220/50 | 2 Locking | JD Rectangular connector with light |
| 22 24/60, 24/50 | | JA Square connector |
| 59 24 VDC (2.5 W) | | JC Square connector with light |
| 87 24 VDC (17.1 W) | | BA Flying leads (18") |
| 61 24 VDC (8.5 W) | | |

Note : Photo shown with JC connector.

* Other options available, see page 357.

OPTIONS

6312D-XXX-PM-XXYZZ

- For piped pilot exhaust replace M by P.
- For bottom cylinder ports (excluding 1/2"), replace by 4.
- For dual pressure valves (see page 293 for use with sandwich regulators), replace by 5.

Note : 1. The valve less base is always the same for internal or external pilot. These options are effected in the base.
2. To order bases without the valve, choose the base from the above table, then add 6300D as a prefix. Example 6300D-131.

45
700
900
82

6300
6500
6600
1300
800
ISO 1
ISO 2
ISO 3
MAC 125A
MAC 250A
MAC 500A

TECHNICAL DATA

| | | | |
|-----------------------------------|--|------------------------------|------------------------|
| Fluid : | Compressed air, vacuum, inert gases | | |
| Pressure range : | Internal pilot : single operator and 3 positions : 25-150 PSI | double operator : 10-150 PSI | |
| | External pilot : vacuum to 150 PSI | | |
| Pilot pressure : | Single operator and 3 positions : 25-150 PSI Double operator : 10-150 PSI | | |
| Lubrication : | Not required, if used select a medium aniline point lubricant (between 180°F to 210°F) | | |
| Filtration : | 40 μ | | |
| Temperature range : | 0°F to 120°F (-18°C to 50°C) | | |
| Flow (at 6 bar, ΔP=1bar) : | 1/4" (2.0 C _v), 3/8" : (2.6 C _v), 1/2" (3.0 C _v) | | |
| Coil : | Epoxy encapsulated - class A wires - Continuous duty. | | |
| Voltage range : | -15% to +10% of nominal voltage | | |
| Protection : | Consult factory | | |
| Power : | ~ Inrush : 14.8 VA | Holding : 10.9 VA | |
| | = 1 to 17.1 W | | |
| Response times : | 24 VDC (8.5 W) | Energize : 10 ms | De-energize : 11 ms |
| | 120/60 | Energize : 4-13 ms | De-energize : 10-17 ms |

Spare parts :

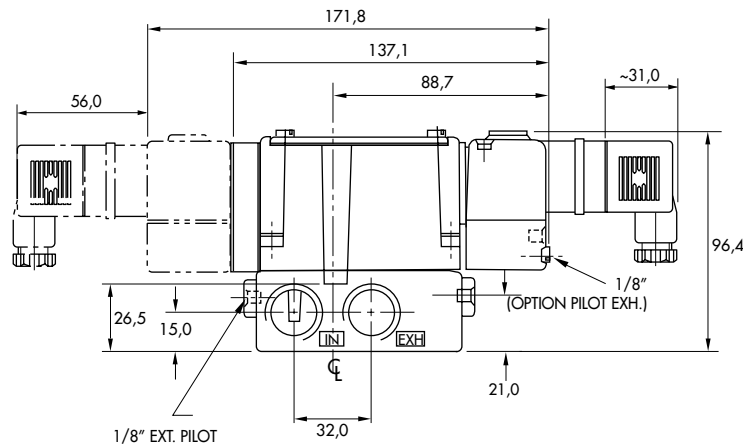
- Solenoid operator (power ≥ 4 W) : D1-XXAA, cover mounting screws 35206 and seal 16234.
- Pilot valve : PME-XXYZZ, including seal 16337. • Pressure seal between valve and base : 16298.
- Mounting screw valve to base (x4) : 35303.

Options :

- BSPP threads.

DIMENSIONS

Dimensions shown are metric (mm)



| Function | Port size | Flow (Max) | Individual mounting | Series |
|------------------|---------------------------|--------------------------|---------------------|--------|
| 4/2 - 4/3 | 1/4" - 3/8" - 1/2" | 3.0 C_v | sub-base "plug-in" | |

OPERATIONAL BENEFITS

- Balanced spool, immune to variations of pressure.
- Short stroke with high flow.
- High shifting forces.
- Checked accumulator guarantees maximum pilot pressure.
- Powerful return force thanks to the combination of mechanical and air springs.
- Bonded spool with minimum friction, shifting in a glass-like finished bore.
- Wiping effect eliminates sticking.
- Pilot valve with balanced poppet, high flow, short and consistent response times.



35
100
200
55
56
57
58
59

HOW TO ORDER

| Port size | Pilot air | 4/2 Single operator | 4/2 Double operator | 4/3 Closed center | 4/3 Open center |
|------------------------|-----------|-----------------------------|-----------------------------|-----------------------------|-----------------------------|
| | | | | | |
| Valve less base | | 6311D-000-PM- XXY DA | 6321D-000-PM- XXY DA | 6331D-000-PM- XXY DA | 6341D-000-PM- XXY DA |
| sub-base | Internal | 6311D-111-PM- XXY DA | 6321D-111-PM- XXY DA | 6331D-111-PM- XXY DA | 6341D-111-PM- XXY DA |
| 1/4" NPTF | External | 6311D-121-PM- XXY DA | 6321D-121-PM- XXY DA | 6331D-121-PM- XXY DA | 6341D-121-PM- XXY DA |
| sub-base | Internal | 6311D-211-PM- XXY DA | 6321D-211-PM- XXY DA | 6331D-211-PM- XXY DA | 6341D-211-PM- XXY DA |
| 3/8" NPTF | External | 6311D-221-PM- XXY DA | 6321D-221-PM- XXY DA | 6331D-221-PM- XXY DA | 6341D-221-PM- XXY DA |
| sub-base | Internal | 6311D-311-PM- XXY DA | 6321D-311-PM- XXY DA | 6331D-311-PM- XXY DA | 6341D-311-PM- XXY DA |
| 1/2" NPTF | External | 6311D-321-PM- XXY DA | 6321D-321-PM- XXY DA | 6331D-321-PM- XXY DA | 6341D-321-PM- XXY DA |

Note : Above codes shown are for side ports without lights.

SOLENOID OPERATOR ▶

XX Y DA*

| XX Voltage | Y Manual operator |
|---------------------------|----------------------|
| 11 120/60, 110/50 | 1 Non-locking |
| 12 240/60, 220/50 | 2 Locking |
| 22 24/60, 24/50 | |
| 59 24 VDC (2.5 W) | |
| 87 24 VDC (17.1 W) | |
| 61 24 VDC (8.5 W) | |

* Other options available, see page 357.

OPTIONS

6311D-XXX-PM-**XXY**DA

- For piped pilot exhaust replace M by P.
- For bottom ports (excluding 1/2"), replace by 4 (no light), by 5 (sgl. light), by 6 (dbl. light).
- For side ports with lights on base, replace by 2 (sgl. light), by 3 (dbl. light).
- For lights on valve body, replace by 3.
- For dual pressure valves with lights on valve body (see page 293 for use with sandwich regulators), replace by 6.

Note : 1. The valve less base is always the same for internal or external pilot. These options are effected in the base.
2. To order bases without the valve, choose the base from the above table, then add 6300D as a prefix. Example 6300D-111.

45
700
900
82

6300
6500
6600
1300
800
ISO 1
ISO 2
ISO 3
MAC 125A
MAC 250A
MAC 500A

TECHNICAL DATA

| | | | |
|-----------------------------------|--|------------------------------|------------------------|
| Fluid : | Compressed air, vacuum, inert gases | | |
| Pressure range : | Internal pilot : single operator and 3 positions : 25-150 PSI | double operator : 10-150 PSI | |
| | External pilot : vacuum to 150 PSI | | |
| Pilot pressure : | Single operator and 3 positions : 25-150 PSI Double operator : 10-150 PSI | | |
| Lubrication : | Not required, if used select a medium aniline point lubricant (between 180°F to 210°F) | | |
| Filtration : | 40 µ | | |
| Temperature range : | 0°F to 120°F (-18°C to 50°C) | | |
| Flow (at 6 bar, ΔP=1bar) : | 1/4" (2.0 C _v), 3/8" : (2.6 C _v), 1/2" (3.0 C _v) | | |
| Coil : | Epoxy encapsulated - class A wires - Continuous duty. | | |
| Voltage range : | -15% to +10% of nominal voltage | | |
| Protection : | Consult factory | | |
| Power : | ~ Inrush : 14.8 VA | Holding : 10.9 VA | |
| | = 1 to 17.1 W | | |
| Response times : | 24 VDC (8.5 W) | Energize : 10 ms | De-energize : 11 ms |
| | 120/60 | Energize : 4-13 ms | De-energize : 10-17 ms |

Spare parts :

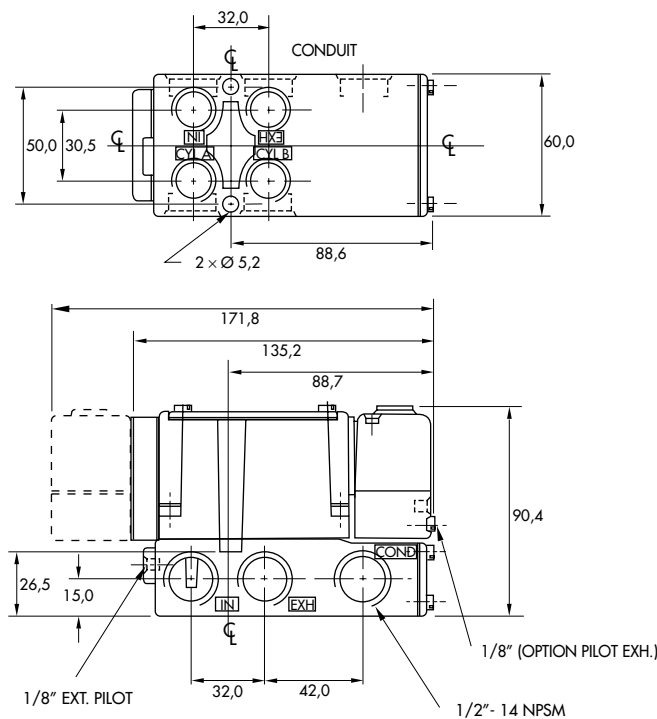
- Solenoid operator (power ≥ 4 W) : D1-XXBE, cover mounting screws 35206 and seal 16234.
- Pilot valve : PME-XXYDA-BE, including seal 16337. • Pressure seal between valve and base : 16298.
- Mounting screw valve to base (x4) : 35303.

Options :

- BSPP threads.

DIMENSIONS

Dimensions shown are metric (mm)



| Function | Port size | Flow (Max) | Manifold mounting | Series |
|------------------|--------------------|--------------------------|------------------------|--------|
| 4/2 - 4/3 | 3/8" - 1/2" | 3.0 C_v | sub-base non "plug-in" | |

OPERATIONAL BENEFITS

- Balanced spool, immune to variations of pressure.
- Short stroke with high flow.
- High shifting forces.
- Checked accumulator guarantees maximum pilot pressure.
- Powerful return force thanks to the combination of mechanical and air springs.
- Bonded spool with minimum friction, shifting in a glass-like finished bore.
- Wiping effect eliminates sticking.
- Pilot valve with balanced poppet, high flow, short and consistent response times.

HOW TO ORDER

| Port size | Pilot air | 4/2 Single operator | 4/2 Double operator | 4/3 Closed center | 4/3 Open center | 4/3 Pressure center |
|------------------------|-----------|----------------------------|----------------------------|----------------------------|----------------------------|----------------------------|
| | | | | | | |
| Valve less base | | 6312D-000-PM- XXYZZ | 6322D-000-PM- XXYZZ | 6332D-000-PM- XXYZZ | 6342D-000-PM- XXYZZ | 6352D-000-PM- XXYZZ |
| sub-base | Internal | 6312D-531-PM- XXYZZ | 6322D-531-PM- XXYZZ | 6332D-531-PM- XXYZZ | 6342D-531-PM- XXYZZ | 6352D-531-PM- XXYZZ |
| 3/8" NPTF | External | 6312D-541-PM- XXYZZ | 6322D-541-PM- XXYZZ | 6332D-541-PM- XXYZZ | 6342D-541-PM- XXYZZ | 6352D-541-PM- XXYZZ |
| sub-base | Internal | 6312D-631-PM- XXYZZ | 6322D-631-PM- XXYZZ | 6332D-631-PM- XXYZZ | 6342D-631-PM- XXYZZ | 6352D-631-PM- XXYZZ |
| 1/2" NPTF | External | 6312D-641-PM- XXYZZ | 6322D-641-PM- XXYZZ | 6332D-641-PM- XXYZZ | 6342D-641-PM- XXYZZ | 6352D-641-PM- XXYZZ |

Note : Above codes shown are for side cylinder ports.

SOLENOID OPERATOR ➤

| XX Voltage | | Y Manual operator | ZZ Electrical connection |
|------------|-----------------|-------------------|-------------------------------------|
| 11 | 120/60, 110/50 | 1 Non-locking | JB Rectangular connector |
| 12 | 240/60, 220/50 | 2 Locking | JD Rectangular connector with light |
| 22 | 24/60, 24/50 | | JA Square connector |
| 59 | 24 VDC (2.5 W) | | JC Square connector with light |
| 87 | 24 VDC (17.1 W) | | BA Flying leads (18") |
| 61 | 24 VDC (8.5 W) | | |

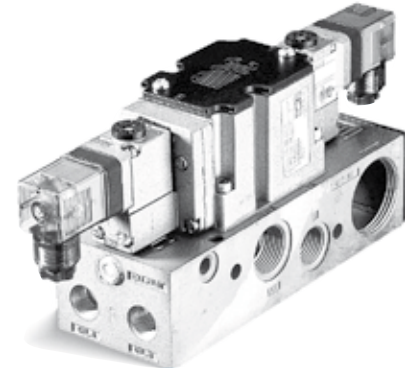
* Other options available, see page 357.

OPTIONS

| 6312D-XXX-PM- XXYZZ | |
|----------------------------|---|
| M | - For piped pilot exhaust replace M by P. |
| 4 | - For bottom cylinder ports, replace by 4. |
| 7 | - For bottom and side cylinder ports, replace by 7. |
| 5 | - For dual pressure valves (see page 293 for use with sandwich regulators), replace by 5. |

MODIFICATIONS - MOD 0210 Bottom inlet port in addition to side inlet port - TO ORDER : 6312D-531-PM-111JA MOD 0210

- Note :
- The valve less base is always the same for internal or external pilot. These options are effected in the manifold.
 - To order manifolds without the valve, choose the manifold from the above table, then add 6300D as a prefix. Example 6300D-631.
 - When ordering an external pilot connection for manifold bases, a common external pilot port is standard. One connection only is required for all the valves in the manifold whether single or double solenoid.
 - Manifolds for solenoid and remote air operated valves must be ganged separately.



35
100
200
55
56
57
58
59

45

700

900

82

6300

6500

6600

1300

800

ISO 1

ISO 2

ISO 3

MAC 125A

MAC 250A

MAC 500A

TECHNICAL DATA

| | | | |
|-----------------------------------|--|--------------------|------------------------------|
| Fluid : | Compressed air, vacuum, inert gases | | |
| Pressure range : | Internal pilot : single operator and 3 positions : 25-150 PSI | | double operator : 10-150 PSI |
| | External pilot : vacuum to 150 PSI | | |
| Pilot pressure : | Single operator and 3 positions : 25-150 PSI Double operator : 10-150 PSI | | |
| Lubrication : | Not required, if used select a medium aniline point lubricant (between 180°F to 210°F) | | |
| Filtration : | 40 µ | | |
| Temperature range : | 0°F to 120°F (-18°C to 50°C) | | |
| Flow (at 6 bar, ΔP=1bar) : | 3/8" : (2.6 C _v), 1/2" (3.0 C _v) | | |
| Coil : | Epoxy encapsulated - class A wires - Continuous duty. | | |
| Voltage range : | -15% to +10% of nominal voltage | | |
| Protection : | Consult factory | | |
| Power : | ~ Inrush : 14.8 VA Holding : 10.9 VA = 1 to 17.1 W | | |
| Response times : | 24 VDC (8.5 W) | Energize : 10 ms | De-energize : 11 ms |
| | 120/60 | Energize : 4-13 ms | De-energize : 10-17 ms |

Spare parts :

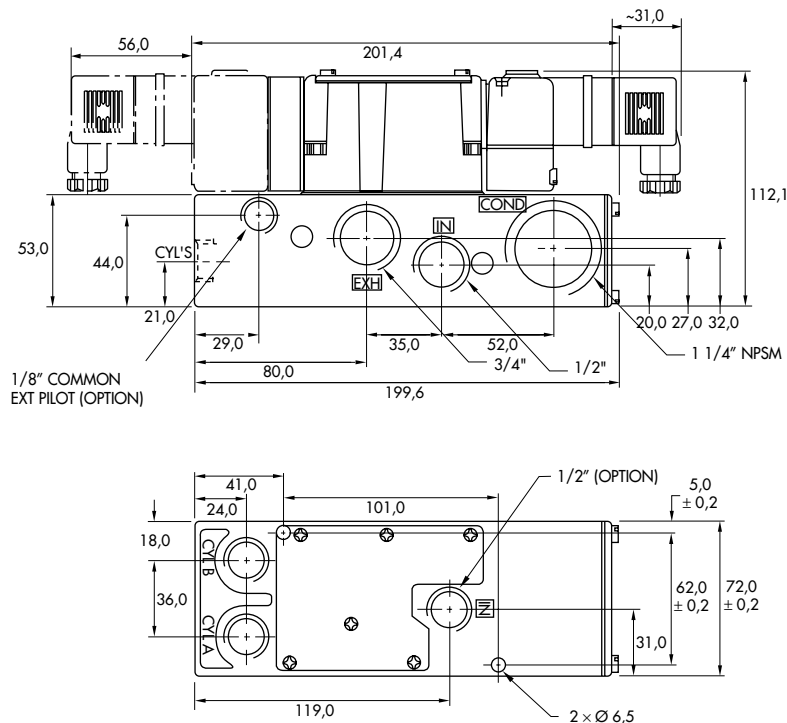
- Solenoid operator (power ≥ 4 W) : D1-XXAA, cover mounting screws 35206 and seal 16234.
- Pilot valve : PME-XYZZ, including seal 16337. • Pressure seal between valve and base : 16396.
- Mounting screw valve to base (x4) : 35303. • Tie-rod (x2) : 19624. • Fastening kit : N-63002-01
- Inlet isolator : 32839. • Exhaust isolator : 28309. • Blank station cover plate : M-63014.

Options :

- BSPP threads.

DIMENSIONS

Dimensions shown are metric (mm)



| Function | Port size | Flow [Max] | Manifold mounting | Series |
|------------------|--------------------|--------------------------|--------------------|--------|
| 4/2 - 4/3 | 3/8" - 1/2" | 3.0 C_v | sub-base "plug-in" | |

OPERATIONAL BENEFITS

- Balanced spool, immune to variations of pressure.
- Short stroke with high flow.
- High shifting forces.
- Checked accumulator guarantees maximum pilot pressure.
- Powerful return force thanks to the combination of mechanical and air springs.
- Bonded spool with minimum friction, shifting in a glass-like finished bore.
- Wiping effect eliminates sticking.
- Pilot valve with balanced poppet, high flow, short and consistent response times.

HOW TO ORDER

| Port size | Pilot air | 4/2 Single operator | 4/2 Double operator | 4/3 Closed center | 4/3 Open center | 4/3 Pressure center |
|------------------------|-----------|-----------------------------|-----------------------------|-----------------------------|-----------------------------|-----------------------------|
| | | | | | | |
| Valve less base | | 6311D-000-PM- XXY DA | 6321D-000-PM- XXY DA | 6331D-000-PM- XXY DA | 6341D-000-PM- XXY DA | 6351D-000-PM- XXY DA |
| sub-base | Internal | 6311D-511-PM- XXY DA | 6321D-511-PM- XXY DA | 6331D-511-PM- XXY DA | 6341D-511-PM- XXY DA | 6351D-511-PM- XXY DA |
| 3/8" NPTF | External | 6311D-521-PM- XXY DA | 6321D-521-PM- XXY DA | 6331D-521-PM- XXY DA | 6341D-521-PM- XXY DA | 6351D-521-PM- XXY DA |
| sub-base | Internal | 6311D-611-PM- XXY DA | 6321D-611-PM- XXY DA | 6331D-611-PM- XXY DA | 6341D-611-PM- XXY DA | 6351D-611-PM- XXY DA |
| 1/2" NPTF | External | 6311D-621-PM- XXY DA | 6321D-621-PM- XXY DA | 6331D-621-PM- XXY DA | 6341D-621-PM- XXY DA | 6351D-621-PM- XXY DA |

Note : Above codes shown are for side cylinder ports without lights.

SOLENOID OPERATOR ►

XX Y DA*

| XX Voltage | Y Manual operator |
|---------------------------|----------------------|
| 11 120/60, 110/50 | 1 Non-locking |
| 12 240/60, 220/50 | 2 Locking |
| 22 24/60, 24/50 | |
| 59 24 VDC (2.5 W) | |
| 87 24 VDC (17.1 W) | |
| 61 24 VDC (8.5 W) | |

* Other options available, see page 357.

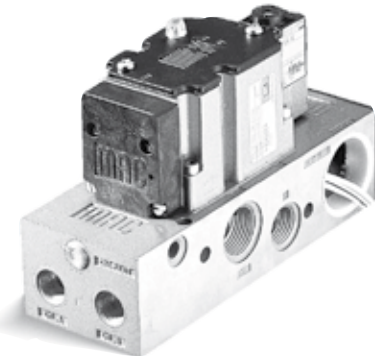
OPTIONS

6311D-XXX-PM-**XXY**DA

- For piped pilot exhaust replace M by P.
- For bottom cylinder ports, replace by 4 (no light), by 5 (sgl. light), by 6 (dbl. light).
- For side cylinder ports with light, replace by 2 (sgl. light), by 3 (dbl. light).
- For bottom and side cylinder ports, replace by 7 (no light), by 8 (sgl. light), by 9 (dbl. light).
- For lights on valve body, replace by 3.
- For dual pressure valves with lights on valve body (see page 293 for use with sandwich regulators), replace by 6.

MODIFICATIONS - MOD 0210 Bottom inlet port in addition to side inlet port - TO ORDER : 6311D-511-PM-111DA MOD 0210

- Note :
- The valve less base is always the same for internal or external pilot. These options are effected in the manifold.
 - To order manifolds without the valve, choose the manifold from the above table, then add 6300D as a prefix. Example 6300D-511.
 - When ordering an external pilot connection for manifold bases, a common external pilot port is standard. One connection only is required for all the valves in the manifold whether single or double solenoid.
 - Manifolds for solenoid and remote air operated valves must be ganged separately.



35

100

200

55

56

57

58

59

45

700

900

82

6300

6500

6600

1300

800

ISO 1

ISO 2

ISO 3

MAC 125A

MAC 250A

MAC 500A

TECHNICAL DATA

| | | | |
|-----------------------------------|--|------------------------------|------------------------|
| Fluid : | Compressed air, vacuum, inert gases | | |
| Pressure range : | Internal pilot : single operator and 3 positions : 25-150 PSI | double operator : 10-150 PSI | |
| | External pilot : vacuum to 150 PSI | | |
| Pilot pressure : | Single operator and 3 positions : 25-150 PSI Double operator : 10-150 PSI | | |
| Lubrication : | Not required, if used select a medium aniline point lubricant (between 180°F to 210°F) | | |
| Filtration : | 40 µ | | |
| Temperature range : | 0°F to 120°F (-18°C to 50°C) | | |
| Flow (at 6 bar, ΔP=1bar) : | 3/8" : (2.6 C _v), 1/2" (3.0 C _v) | | |
| Coil : | Epoxy encapsulated - class A wires - Continuous duty. | | |
| Voltage range : | -15% to +10% of nominal voltage | | |
| Protection : | Consult factory | | |
| Power : | ~ Inrush : 14.8 VA | Holding : 10.9 VA | |
| | = 1 to 17.1 W | | |
| Response times : | 24 VDC (8.5 W) | Energize : 10 ms | De-energize : 11 ms |
| | 120/60 | Energize : 4-13 ms | De-energize : 10-17 ms |

Spare parts :

- Solenoid operator (power ≥ 4 W) : D1-XXBE, cover mounting screws 35206 and seal 16234.
- Pilot valve : PME-XXYDA-BE, including seal 16337. • Pressure seal between valve and base : 16396.
- Mounting screw valve to base (x4) : 35303. • Tie-rod (x2) : 19624. • Fastening kit : N-63002-01
- Inlet isolator : 32839. • Exhaust isolator : 28309. • Blank station cover plate : M-63014.

Options :

- BSPP threads.

DIMENSIONS

Dimensions shown are metric (mm)

