

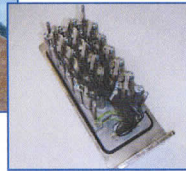


Application Description

- Drop-in solution to replace the OEM supplied valves on Krones® filling machines. This custom 16 station bar manifold solution bolts up to the existing mounting screws.



Previous solution



Challenges

- Regular replacement of OEM supplied valves.
- Time consuming OEM valve replacement due to the complex mounting of the valves and the high leakage rate.
- Inconsistent response times of the valve.

MAC Solutions

- BV314A-Cx1-00-BxxA-CTA Mod. XMP2 - SIR E266



Customer Benefits

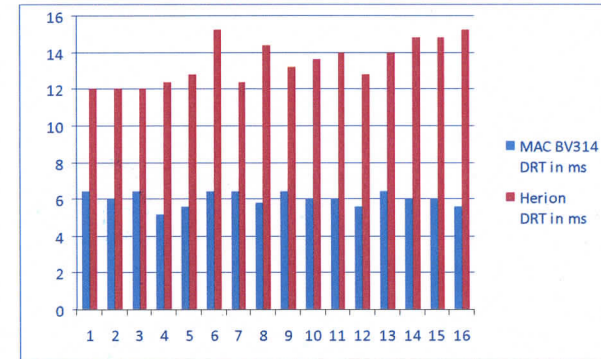
- Reliable alternative to OEM supplied valves that have been a source of much downtime.
- Ability to replace valve individually if failure occurs without manifold disassembly.
- Less downtime and reduced cost per failure.
- Less spare parts in inventory.
- Increased reliability.
- Increased filling accuracy due to the consistent response times of the valves (see chart).

Cost Savings

- Savings realized in increased production, reduced labour cost and fewer replacement parts.
- Savings realized by reducing overfilling.
- MDN Associates worldwide are skilled to support you in estimating cost savings you can achieve with this upgrade.



Response times



Valve number	MAC BV314 DRT in ms	Herion DRT in ms
1	6,4	12,0
2	6,0	12,0
3	6,4	12,0
4	5,2	12,4
5	5,6	12,8
6	6,4	15,2
7	6,4	12,4
8	5,8	14,4
9	6,4	13,2
10	6,0	13,6
11	6,0	14,0
12	5,6	12,8
13	6,4	14,0
14	6,0	14,8
15	6,0	14,8
16	5,6	15,2
Difference between fastest and slowest valve	1,2 ms	3,2 ms

